

BIZINSIGHT DESKTOP EDITION 1.2.5

# Release Notes

**BizInsight Desktop Edition**  
**Build 1.2.5**  
**5/01/2015**

## Table of Contents

Bizinsight Desktop Edition 1.2.5 .....	1
Release Notes .....	1
1. BizInsight Desktop Edition – System Requirements .....	3
1.1. Client Supported OS.....	3
1.2. Server Supported OS (Administration elevation required).....	3
1.3. Microsoft Office Excel versions supported .....	3
1.4. A note on performance.....	3
2. BizInsight – Desktop Edition – New Feature .....	4
2.1 New Data Sync Settings option .....	4
3. BizInsight Desktop Edition – Enhancements.....	4
3.1. Improved Stability .....	4
3.2. Column-width preservation when List refreshed .....	4
3.3. SuperFunctions that yield no value no longer display error message.....	4
3.4. Cell Format preservation when SuperFunction is inserted .....	4
3.5. Added messaging to guide users in case of circular reference instance .....	4
3.6. Stackable Lists now supported .....	5
4. BizInsight Desktop Edition – Bug Fixes.....	6
4.1. Errors when using Cell Reference .....	6
4.2. Unnecessary popup messages .....	6
4.3. Parameter operators resetting to = when being edited .....	6
4.4. Buttons hidden for users using the Text Magnifier feature in Windows Control Panel.....	6
4.5. Excel crashing at times while editing a SuperFunction.....	6
4.5 Zeroes not displaying as available values in parameter level dropdowns.....	6
5. BizInsight Desktop Edition– Known Issues.....	<b>Error! Bookmark not defined.</b>
6. BizInsight Desktop Edition – Best Practices .....	<b>Error! Bookmark not defined.</b>

# 1. BizInsight Desktop Edition – System Requirements

## 1.1. Client Supported OS

- Windows 7 (32-bit & 64-bit)
- Windows 8 (32-bit & 64-bit)
- Windows 8.1 (32-bit & 64-bit)

## 1.2. Server Supported OS (Administration elevation required)

- Windows Server 2008 R2 SP2 or later (32-bit & 64-bit)
- Windows Server 2008 R2 SP2 or later (32-bit & 64-bit)
- Windows Server 2012 (64-bit)
- Windows Server 2012 R2 (64-bit)

## 1.3. Microsoft Office Excel versions supported

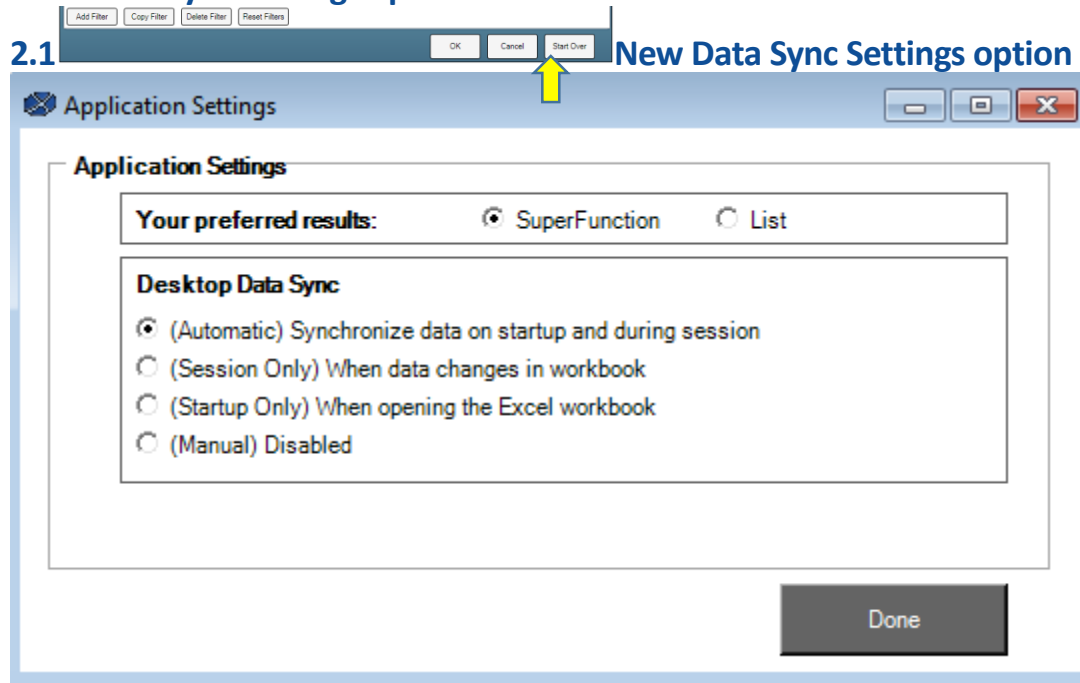
- 2010 Office (32-bit & 64-bit)
- 2013 Office On Premise (32-bit & 64-bit)
- 2013 Office 365 Click to Run (32-bit & 64-bit)

## 1.4. A note on performance

- Users of 64-bit versions of Excel will be able to use larger amounts than Excel's 32-bit counterpart. Excel bitness and available RAM are the two largest factors in performance. For best results, 64-bit Excel and 8 GB RAM minimum is recommended.

## 2. BizInsight – Desktop Edition – New Feature

### 2.1 New Data Sync Settings option



## 3. BizInsight Desktop Edition – Enhancements

### 3.1. Improved Stability

Improved stability when clicking around in the workbook with the Data Query open

### 3.2. Column-width preservation when List refreshed

Eliminated the behavior of column widths in a List being re-sized when the List is refreshed

### 3.3. SuperFunctions that yield no value no longer display error message

Previously SuperFunctions that yielded no results returned an error message in the cell where the function was inserted.

### 3.4. Cell Format preservation when SuperFunction is inserted

Eliminated the behavior of cell formats being changed to General when a SuperFunction is inserted into the cell.

### 3.5. Added messaging to guide users in case of circular reference instance

Adding messaging to guide users in instances where circular references were being created with the Data Query

### 3.6. Stackable Lists now supported

## 4. BizInsight Desktop Edition – Bug Fixes

### 4.1. Errors when using Cell Reference

1. Fixed a bug that caused errors when using cell reference on parameters that utilized the IN operator
2. Fixed a bug that was assuming an intention of cell reference when a literal value also could double as a valid cell reference address (Example: 'A1')

### 4.2. Unnecessary popup messages

1. Fixed a bug that caused a popup message upon exit of Excel that stated the data had changed when an analysis set was created, even when the data itself had not changed
2. Previously if a user clicked in a workbook while selected data in the workbook was loading, an error message would pop up. This has been resolved.

### 4.3. Parameter operators resetting to = when being edited

Fixed a bug that caused parameter operators to be reset to = when editing an existing SuperFunction with the Query Data interface

### 4.4. Buttons hidden for users using the Text Magnifier feature in Windows Control Panel

Fixed a bug that caused buttons to remain hidden for some users who were using the Text Magnifier feature in Windows Control Panel

### 4.5. Excel crashing at times while editing a SuperFunction

Fixed bug that caused Excel to crash for some users when trying to edit a SuperFunction with the Query Data interface

### 4.5. Zeroes not displaying as available values in parameter level dropdowns

Fixed a bug that prevented zeroes from displaying as an available value in parameter level dropdowns in the Query Data interface

